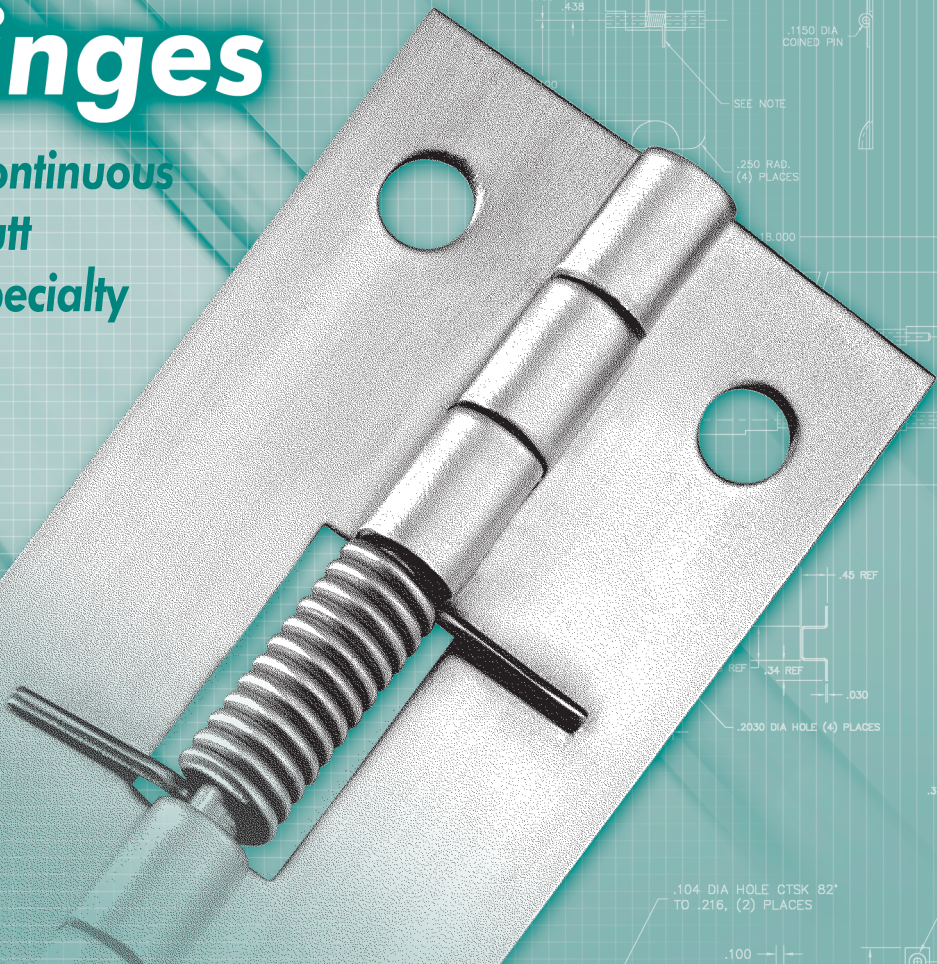


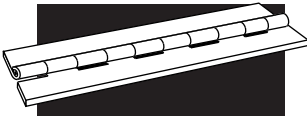
# Hinges

- > Continuous
- > Butt
- > Specialty



## CONTENTS

<p><b>4</b> Continuous Hinges</p> <ul style="list-style-type: none"> <li>316 STS Hinges</li> <li>Electrogalvanized Hinges</li> <li>Polished Stainless w/holes</li> <li>Preplated Steel w/holes</li> <li>Military Hinges</li> </ul>	<p><b>7</b> Butt Hinges</p> <p><b>8</b> Weld-on Hinges</p> <p><b>9</b> Concealed Hinges</p> <p><b>9</b> Latch Hinges</p> <p><b>10</b> Un-Hinges</p>	<p><b>10</b> Invisible Hinges</p> <p><b>11</b> Slip Joint Hinges</p> <p><b>11</b> Flag Hinges</p> <p><b>12</b> Spring Hinges</p> <p><b>12</b> Cover Hinges</p>
--	---	--



# CONTINUOUS HINGES

Guden's continuous hinges are available in approximately 140 stock sizes, see chart below. Custom lengths are available.



## STAINLESS, STEEL, AND ALUMINUM

Available in stainless steel leaf & pin, steel leaf & pin, aluminum with aluminum pin and aluminum with stainless steel pin, and in some cases a steel leaf with brass pin.

Leaf Thickness	Pin Dia.	Knuckle Length	Length	Open Width												
				.50	.75	1.00	1.06	1.25	1.50	2.00	2.50	3.00	4.00	5.00	6.00	
.025	.062	.25	72		•	•			•	•						
		.50	72	•	•											
.032	.062	.50	72		•	•	•	•	•							
		.25	72		•		•	•	•							
.035	.086	.25	72		•		•	•	•	•						
.040	.091	.50	72				•	•	•	•	•		•			
		.625	72.5				•	•	•	•	•					
.050	.120	.50	72				•	•	•	•	•	•	•	•		
		.625	85				•	•	•	•	•	•	•	•		
.060	.120	.50	84				•	•	•	•	•	•	•	•		
		.625	85				•	•	•	•	•	•	•	•		
		.75	72				•	•	•	•	•	•	•	•		
		1.00	84				•	•	•	•	•	•	•	•		
		1.87	.625	72.5				•	•	•	•	•	•	•	•	
		1.00	84				•	•	•	•	•	•	•			
		2.00	84				•	•	•	•	•	•	•			
.072	.187	.50	84				•	•	•	•	•	•	•			
.075	.187	2.00	84							•	•	•	•	•		
		.250	1.00	72						•	•	•	•	•	•	
		2.00	84							•	•	•	•	•	•	•
.090	.187	2.00	72							•	•	•	•	•	•	•
		.250	1.00	72						•	•	•	•	•	•	•
		2.00	84							•	•	•	•	•	•	•
.120	.250	2.00	72							•	•	•	•	•	•	•
		.375	2.00	84						•	•	•	•	•	•	•
.179	5.00	2.00	96									•		•		
.250	.625	1.50	72									•		•		

Please visit [guden.com](http://guden.com) for precise availability of parts, dimensions, materials, 2D drawings and 3D CAD models, and associated part numbers.

### TYPE 316 STAINLESS STEEL

Leaf Thickness	Pin Dia.	Knuckle Length	Length	Open Width					
				1.06	1.25	1.50	2.00	2.50	3.00
.040	.091	.50	72	•	•	•	•		
.060	.120	.50	72			•	•	•	•

### STEEL / ELECTROGALVANIZED

Leaf Thickness	Pin Dia.	Knuckle Length	Length	Open Width					
				1.06	1.25	1.50	2.00	2.50	3.00
.042	.091	.50	72			•	•		
.060	.120	.50	72			•	•		•

### POLISHED STAINLESS WITH HOLES – ON 2" CENTERS

Leaf Thickness	Pin Dia.	Knuckle Length	Length	Open Width		Hole Dia #5 ctsk	Open Width			Hole Dia #6 ctsk
				1.06	1.25		1.50	2.00	2.50	
.040	.091	.50	72	•	•	•	•	•		•
.060	.120	.50	72				•	•		•

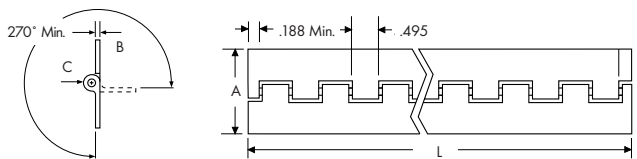
### PREPLATED STEEL HINGES WITH HOLES – ON 2" CENTERS

Leaf Thickness	Pin Dia.	Knuckle Length	Length	Open Width		Hole Dia #4 ctsk	Open Width			Hole Dia #6 ctsk
				1.06	1.25		1.50	2.00	2.50	
.040	.091	.50	72	•	•	•	•	•		•

### MILITARY CONTINUOUS HINGES

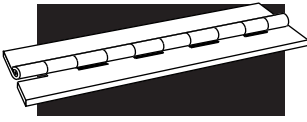
### MS-20001 SERIES CONTINUOUS HINGES; TYPE 2024-T3511 EXTRUDED ALUMINUM

Specify	For
P	Anodized per Mil-A-8625, Type II
C	Alodine per Mil-C-5541
A	Aluminum Alloy 7075-T 73511



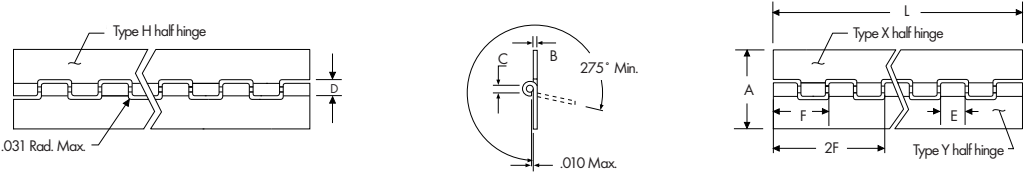
Dash No.	A	B - Leaf Thickness		C
	Open Width	Maximum	Minimum	Pin Diameter
-2	1.062	.056	.044	.090
-3	1.250	.056	.044	.090
-4	1.500	.056	.044	.090
-5	1.750	.056	.044	.090
-6	2.000	.056	.044	.090
-8	2.000	.076	.064	.180
-9	2.500	.056	.044	.090
-10	2.750	.056	.044	.090
-12	3.375	.115	.103	.090
-14	3.719	.163	.149	.129
-16	3.938	.210	.196	.180

Please visit [guden.com](http://guden.com) for precise availability of parts, dimensions, materials, 2D drawings and 3D CAD models, and associated part numbers.



# CONTINUOUS HINGES

## MILITARY CONTINUOUS HINGES (CONT.)

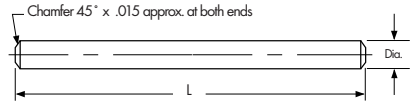


## MS-20257 SERIES CONTINUOUS HINGES

Dash No.		A		B		C		D		E		F	Pin Dia. Cor. Res. Steel
Unano- dized	Ano- dized	Alum. Alloy	Cor. Res. Steel	Open Width	Alum. Alloy	Cor. Res. Steel	Alum. Alloy	Cor. Res. Steel	Alum. Alloy	Cor. Res. Steel	Loop	Pitch	
1	P1	C1		.75	.032	.031	.066	.066	.169	.166	.490	1.000	.063
2	P2	C2		1.06	.040	.037	.093	.093	.220	.211	.490	1.000	.090
3	P3	C3		1.25	.040	.050	.093	.121	.220	.278	.490	1.000	.118
4	P4	C4		1.50	.040	.062	.093	.121	.220	.314	.490	1.000	.118
5	P5	C5		2.00	.051	.062	.093	.183	.253	.376	.490	1.000	.180
6	P6	C6		2.00	.064	.062	.183	.183	.382	.376	1.990	4.047	.180

## MS-20253\* AND A-A-55486 HINGE PINS FOR MS-20257 AND MS-20001 SERIES CONTINUOUS HINGES

Dash No.		Diameter
Cadmium plated	Passivated	
-P1	-1	.062
-P2	-2	.089
-P3	-3	.117
-P4	-4	.179
-P5	-5	.129



- Notes: 1. Use cadmium plated, corrosion resistant steel with aluminum alloy hinge.  
 2. Use passivated corrosion resistant steel pin with corrosion resistant steel hinge.  
 3. Normally supplied 72" long, i.e., MS-20253-72.00.  
 4. Add L to the end of the part number to denote solid film lubricant.

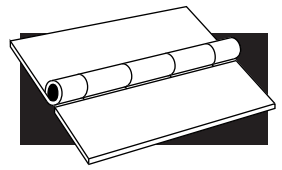
## MS-35000 & A-A-55000 SERIES CONTINUOUS HINGES

Length	Leaf		Pin Diameter	Open Width											
	Thickness	Knuckle		.75	1.00	1.06	1.25	1.50	2.00	2.50	3.00	3.50	4.00	5.00	6.00
72	.032	0.5	.063	•	•	•	•	•							
	.040	0.5	.091			•	•	•	•						
72.50	.040	.62	.091			•	•	•	•						
	.050	.62	.125			•	•	•	•						
85	.060	.62	.125			•	•	•	•						
84	.060	1.00	.125			•	•	•	•						
			.187			•	•	•	•						
	.075	2.00	.187			•	•	•	•						
			.250					•	•	•	•				
	.090	2.00	.250						•	•	•	•			
			.312								•	•	•	•	•
	.125	2.00	.375										•	•	•
			.312										•	•	•
			.375									•	•	•	

Materials are available in aluminum, brass leaf & copper pin, stainless steel leaf & pin, plain steel leaf & pin, and plain steel leaf, cadmium plated & brass pin. For A-A-55000 stainless steel leaf & pin materials will be supplied with passivated leaves.

Please visit [guden.com](http://guden.com) for precise availability of parts, dimensions, materials, 2D drawings and 3D CAD models, and associated part numbers.

# BUTT HINGES



## STAINLESS STEEL - SERIES 7000, 8000

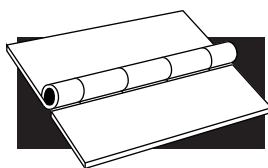
Length	Leaf	Pin	Open Width							
	Thickness	Diameter	1.06	1.50	2.00	2.50	3.00	4.00	5.00	6.00
1.00	.035	.035	•							
1.50	.035	.086		•						
	.050	.120		•						
2.00	.060	.120			•					
	.078	.187			•					
2.50	.060	1.20				•				
	.078	.187				•				
3.00	.060	.120					•			
	.078	.187					•			
	.090	.187					•			
	.090	2.50					•			
4.00	.120	2.50					•			
	.078	.187						•		
	.120	.250						•		
5.00	.120	.375							•	
	.120	.250								•
6.00	.120	.250								•
	.165	.375								•



## PLAIN STEEL - SERIES 3000, 4000, 5000, 6000

Length	Leaf	Pin	Open Width										
	Thickness	Diameter	.75	1.06	1.31	1.50	2.00	2.50	3.00	3.83	4.00	5.00	6.00
.75	.035	.086	•										
1.00	.035	.086		•									
1.25	.035	.086		•									
1.50	.035	.086		•		•							
	.050	.120			•	•							
	.055	.120				•							
2.00	.035	.086		•		•	•						
	.060	.120				•	•						
	.078	.187				•	•						
2.50	.060	.120				•		•					
	.075	.187						•					
	.078	.187						•					
	.120	.250						•					
3.00	.060	.120							•				
	.078	.187							•				
	.090	.250							•				
	.120	.250							•				
4.00	.078	.187								•			
	.090	.250								•			
	.120	.250								•			
5.00	.120	.250									•		
6.00	.120	.250											•
	.187	.500											•

Please visit [guden.com](http://guden.com) for precise availability of parts, dimensions, materials, 2D drawings and 3D CAD models, and associated part numbers.



# BUTT HINGES

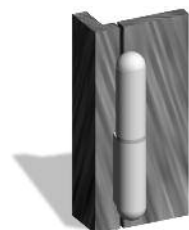
## TYPE 316 STAINLESS STEEL — SERIES 2000

Length	Leaf Thickness	Pin Diameter	Open Width		
			2.00	3.00	4.00
2.00	.075	1.87	•		
3.00	.090	1.87		•	
3.00	.120	2.50		•	
4.00	.120	2.50			•

## ALUMINUM — SERIES 9000

Length	Leaf Thickness	Pin Diameter	Open Width						
			1.06	1.50	2.00	2.50	3.00	4.00	
1.00	.040	.080	•						
1.50	.050	.120		•					
2.00	.060	.120			•				
	.078	.187			•				
2.50	.060	.120				•			
	.078	.187				•			
3.00	.060	.120						•	
	.078	.187						•	
	.090	.250						•	
	.120	.250						•	
4.00	.120	.250							•

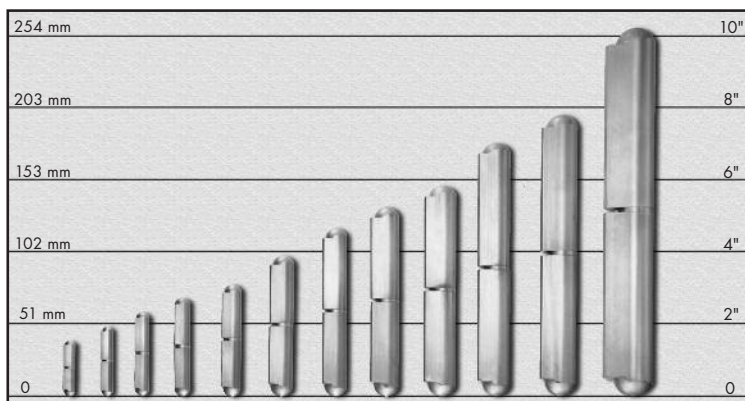
## WELD-ON HINGES



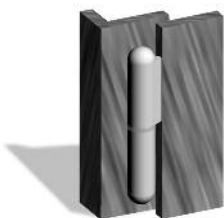
Weld-On Hinges are well suited for flush construction.

The Guden Weld-On Hinge is an attractive alternative for your hinge needs. It offers continuous, smooth operation and eliminates the need for unsightly fasteners and leaves.

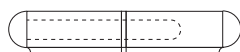
The Weld-On Hinge is ideal for a wide range of applications, everything from electrical and tool boxes to machinery doors and air conditioning enclosures.



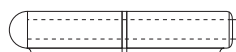
Available in steel w/steel pin, steel w/brass pin, steel w/steel pin grease fitting, steel w/brass pin grease fitting, steel w/steel loose pin, and stainless and aluminum w/STS pin. Available in lengths from 1.58-10.27 and heights from 0.37-1.46.



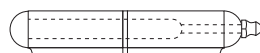
Weld-On Hinges work well in overlapping construction.



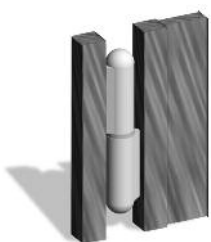
Fixed Pin



Removable Pin



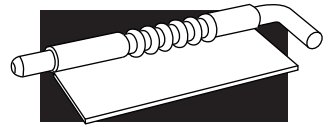
Fixed Pin with Grease Fitting



Weld-On Hinges are well suited in gate construction.

Please visit [guden.com](http://guden.com) for precise availability of parts, dimensions, materials, 2D drawings and 3D CAD models, and associated part numbers.

# SPECIALTY HINGES



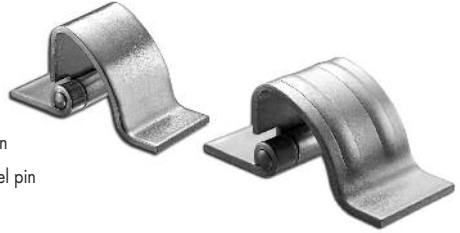
A smooth, almost seamless cabinet surface is now possible with Guden concealed hinges. The radius of the moveable leaf swings the door out and clear of the cabinet frame. Two standard sizes are ready for welded assembly, or can be custom drilled for screw or bolt assembly. Custom sizes are also available.

## CONCEALED HINGES

Length	Thickness	Holes	Rib
.80	.075	No	No
1.25	.090	No	Yes

Available in:

- Aluminum w/stainless steel pin
- Stainless steel w/stainless steel pin
- Steel w/steel pin

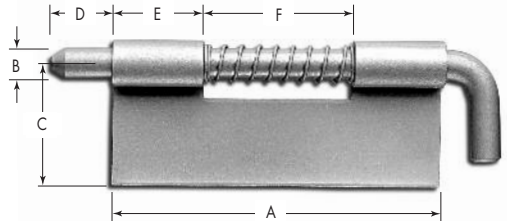


Dual purpose latch hinges make excellent lid or door latches, or easily removable hinges. The spring-loaded, chamfered pin holds securely, whether used as a latch or hinge. They are the answer to door removal.

## LATCH HINGES

Holes	Thickness	A	B	C	D	E	F
No	.040	.875	.125	.500	.187	.250	.375
No	.040	1.38	.156	.750	.250	.375	.625
No	.050	2.00	.187	.875	.375	.500	1.00
No	.062	2.75	.250	1.00	.500	.750	1.25

Available in zinc plated steel and stainless steel, with or without holes.



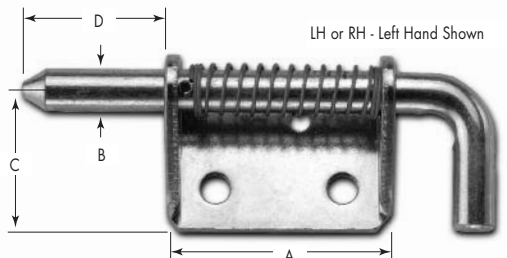
LH or RH - Left Hand Shown

Our heavy duty latch hinge line is available in standard assembly, and with an optional pin hold back feature to lock pin in the retracted position for easier assembly and quick removal of doors.

## HEAVY DUTY LATCH HINGES

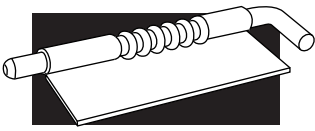
Holes	Thickness	A	B	C	D
Yes	.125	2.00	.375	1.12	1.25
Yes	.187	3.00	.50	1.25	1.50

Available in zinc plated steel and stainless steel.



LH or RH - Left Hand Shown

Please visit [guden.com](http://guden.com) for precise availability of parts, dimensions, materials, 2D drawings and 3D CAD models, and associated part numbers.



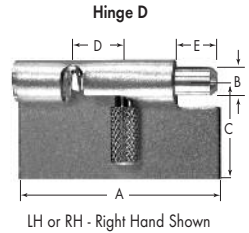
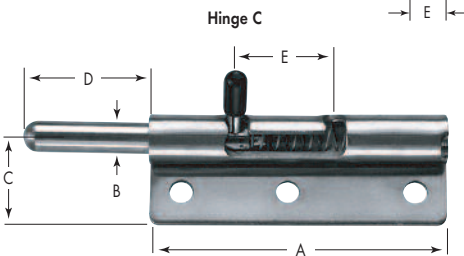
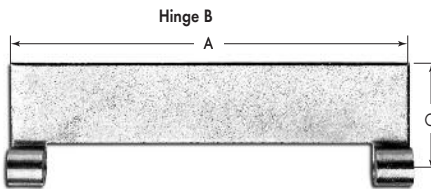
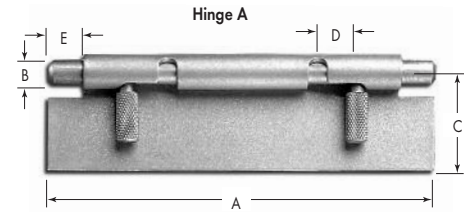
# SPECIALTY HINGES

Doors come right off with Guden's un-hinge. It is a quick-release hinge that can be mounted in any position and requires no tools. An easy squeeze of the knurled knobs retracts the spring-loaded pins from the knuckles to release the leaves. Precise manufacturing standards eliminate excess side and end play for minimum door movement.

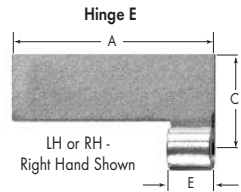
## UN-HINGES — STAINLESS STEEL

Hinge	Thickness	A	B	C	D	E	SS	Zinc Plated
A	.050	4.00	.250	1.00	.41	.37	•	
B	.050	4.00	N/A	1.00	N/A	.37	•	
C	.060	3.50	.365	1.00	1.125	1.50		•
D	.050	1.75	.250	1.00	.41	.37	•	•
E	.050	1.75	N/A	1.00	N/A	.37	•	•
F	.050	1.75	.250	1.00	.53	.50	•	
G	.180	2.89	.50	1.00	1.25	1.312	•	

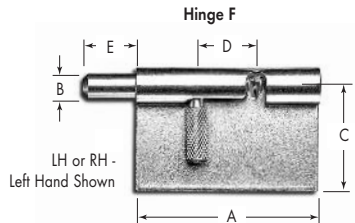
Stocked without holes. Available with holes.



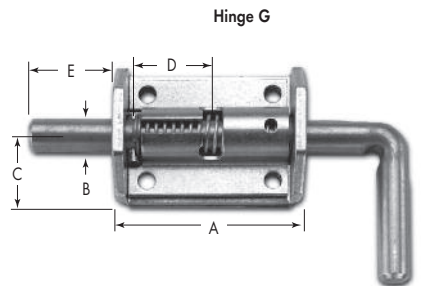
LH or RH - Right Hand Shown



LH or RH - Right Hand Shown



LH or RH - Left Hand Shown



For sizing and mounting information, visit website at [guden.com](http://guden.com) and look for our invisible hinge calculator in the invisible hinge section.

## INVISIBLE HINGES

Length	Finish
1.50	04, 26D
2.375	04, 26D
1.50	04, 26D



Please visit [guden.com](http://guden.com) for precise availability of parts, dimensions, materials, 2D drawings and 3D CAD models, and associated part numbers.

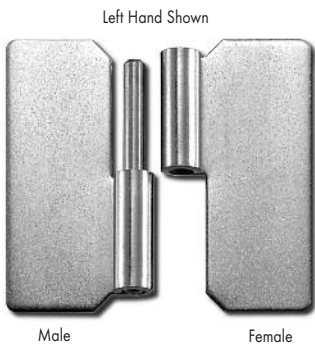


Quick, easy and economical door removals are the benefits of Guden slip joint hinges. Custom sizes, constructions and hole patterns are also available.

## SLIP JOINT HINGES

Length	Leaf Thickness	Pin Diameter	Open Width*						
			1.44	1.68	1.87	2.00	2.50	3.00	
1.50	.050	.120	•						
2.00	.072	.125		•					
	.080	.187		•		•			
2.50	.075	.187			•			•	
	.093	.187						•	
3.00	.093	.187				•			
	.093	.250							•

Available with stainless steel leaf & pin, steel leaf & pin, and aluminum leaf with stainless steel pin, and in some cases a steel leaf with nickel plated pin. \*Open width when assembled.

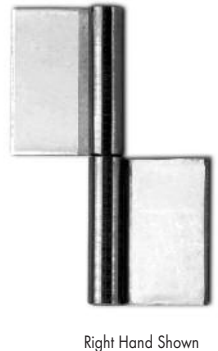
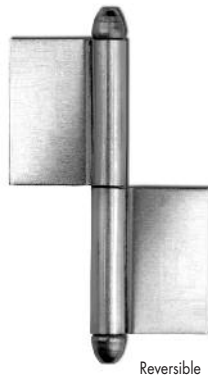
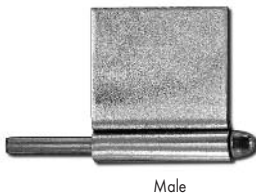


Please visit [guden.com](http://guden.com) for individual drawings with sizes and hole placements.

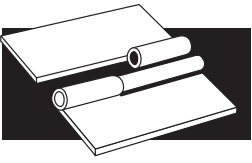
## FLAG HINGES

Assembled Length	Leaf Width	Leaf Thickness	Pin Diameter
2.00	.68	.050	.130
	1.00	.050	.120
2.37	1.20	.060	.156

Available in steel and stainless steel.



Please visit [guden.com](http://guden.com) for precise availability of parts, dimensions, materials, 2D drawings and 3D CAD models, and associated part numbers.



# SPECIALTY HINGES

Hold doors open or closed with Guden spring hinges. Butts are carried in stock for either surface or concealed mounting in several sizes, materials and finishes. Custom continuous and butt spring hinges are made to your individual specifications. For more detailed information about dimensions and torques, see our Spring Hinge Design Form at [Guden.com](http://Guden.com).

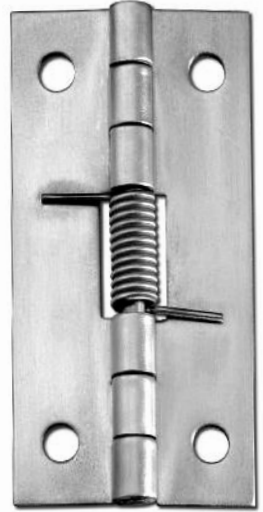
## SPRING HINGES

Length	Leaf Thickness	Pin Diameter	Open Width				
			.75	1.00	1.25	1.50	2.00
1.25	.025	.062	•				
1.75	.035	.086		•			
2.00	.035	.091		•			
	.040	.091		•			
2.18	.050	.115			•		
3.50	.040	.091				•	
3.25	.060	.156				•	
5.00	.050	.120					•
5.375	.060	.156				•	
8.75	.050	.090				•	

Available in steel and stainless steel, open or closed loading, and with or without holes.

Some available in a zinc finish.

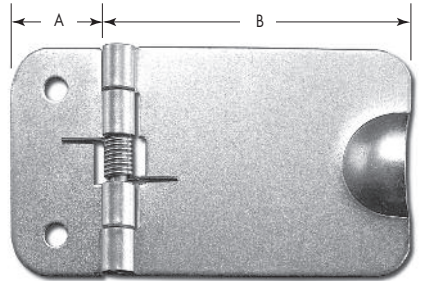
Spring loaded to open shown; for spring loaded to close versions, spring legs are on the opposite side of the leaves



## COVER HINGES

Length	Open Width		Leaf Thickness	Pin Diameter
	A	B		
1.562	2.00	.75	.050	.115

Available in steel with a zinc finish. Supplied with two holes.



## CABINET SPRING HINGES

Length	Open Width	Leaf Thickness	Pin Diameter
1.11	1.61	.050	.120

Available in steel with a nickel or brass finish. Supplied with four holes.

Normal loading is open.



Please visit [guden.com](http://guden.com) for precise availability of parts, dimensions, materials, 2D drawings and 3D CAD models, and associated part numbers.